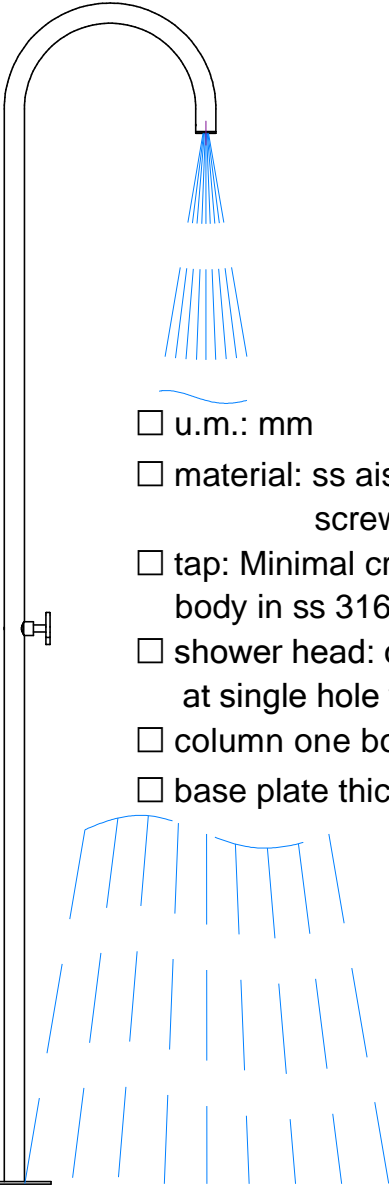
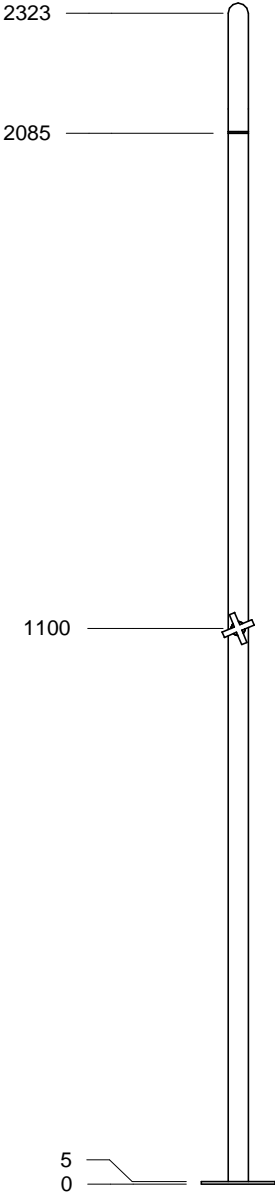
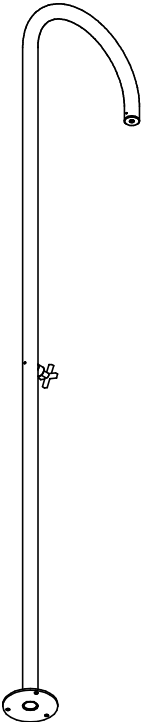
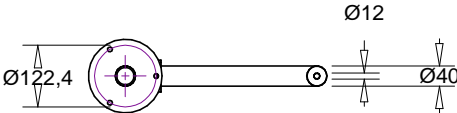


# STILO CURVE 40 SH 1M



- u.m.: mm
- material: ss aisi 316L,  
screws in aisi 316 (A4)
- tap: Minimal cross handle in ss 316L,  
body in ss 316L, traditional valve in brass,
- shower head: concealed, anti-limescale,  
at single hole with conical water jet
- column one body, thickness: 3mm
- base plate thickness: 5mm

